

Corporate Profile



Conceptual Technologies Inc.

Provider of chemical cleaning services and manufacturer of specialty chemicals

PO Box 3104, LCD Main, Sherwood Park, Alberta, Canada. T8H 2T1
6812/14, 78th Avenue NW, Edmonton, Alberta, Canada. T6B 2J5



Corporate Overview

Conceptual Technologies Inc. is a Canadian corporation, with its head office located in Edmonton, Alberta.

The company was formed in 1996 and subsequently became a corporation in 2005.

Since then, CTI has since been providing to industries, specialty chemicals and Chemical Cleaning in Place (CCIP) services.

During the early years CTI serviced clients mostly in Canada, United States of America, and Trinidad & Tobago.

In 2008 CTI penetrated a little further into the global market, this came with the establishment of a branch in Malaysia. From this platform we are able provide our products and services to the Southeast Asia market.

At CTI we strive to gain a more comprehensive understanding of our customers' needs. Our customers in turn rely on our technical expertise to improve their production efficiency, lower maintenance cost, and offer environmentally friendly solutions.

We are at all times committed to the responsible care of our environment. CTI integrates strict environmental, health and safety protocols into its HSE policy.

P O B o x 3 1 0 4 , L C D M a i n , S h e r w o o d P a r k , A l b e r t a , C a n a d a . T 8 H 2 T 1
6 8 1 2 / 1 4 , 7 8 ^{t h} A v e n u e N W , E d m o n t o n , A l b e r t a , C a n a d a . T 6 B 2 J 5



Corporate History

In 1996 CTI saw its beginnings in a modest laboratory in Medicine Hat, Alberta, Canada.

What started out as a basic analytical lab, CTI began researching solutions and techniques to prevent arterial blockages in the oil and gas industry.

Alberta is known for its heavy crude oil, with high asphaltene and paraffin content. Our innovative solutions have worked to keep asphaltene and paraffin from crystallizing and precipitating out of solution. Our gas well foaming agents have been used to upload water from many of Southern Alberta's shallow gas wells.

In 2000, CTI patented two specially reacted surfactants, which are still being used to optimize its chemical solutions and its chemical cleaning processes.

In 2005 CTI placed third in a new venture contest, with its Hydro-LOGIC unit. This added a new dimension to the company's portfolio and with larger companies scaling back their service operations, CTI embarked on building equipment to provide chemical cleaning services to the oil and gas industry.

... And here we are today.



Corporate Structure

CTI has over the years worked to refine the way it conducts business, through good corporate governance.



Branches/Field Offices

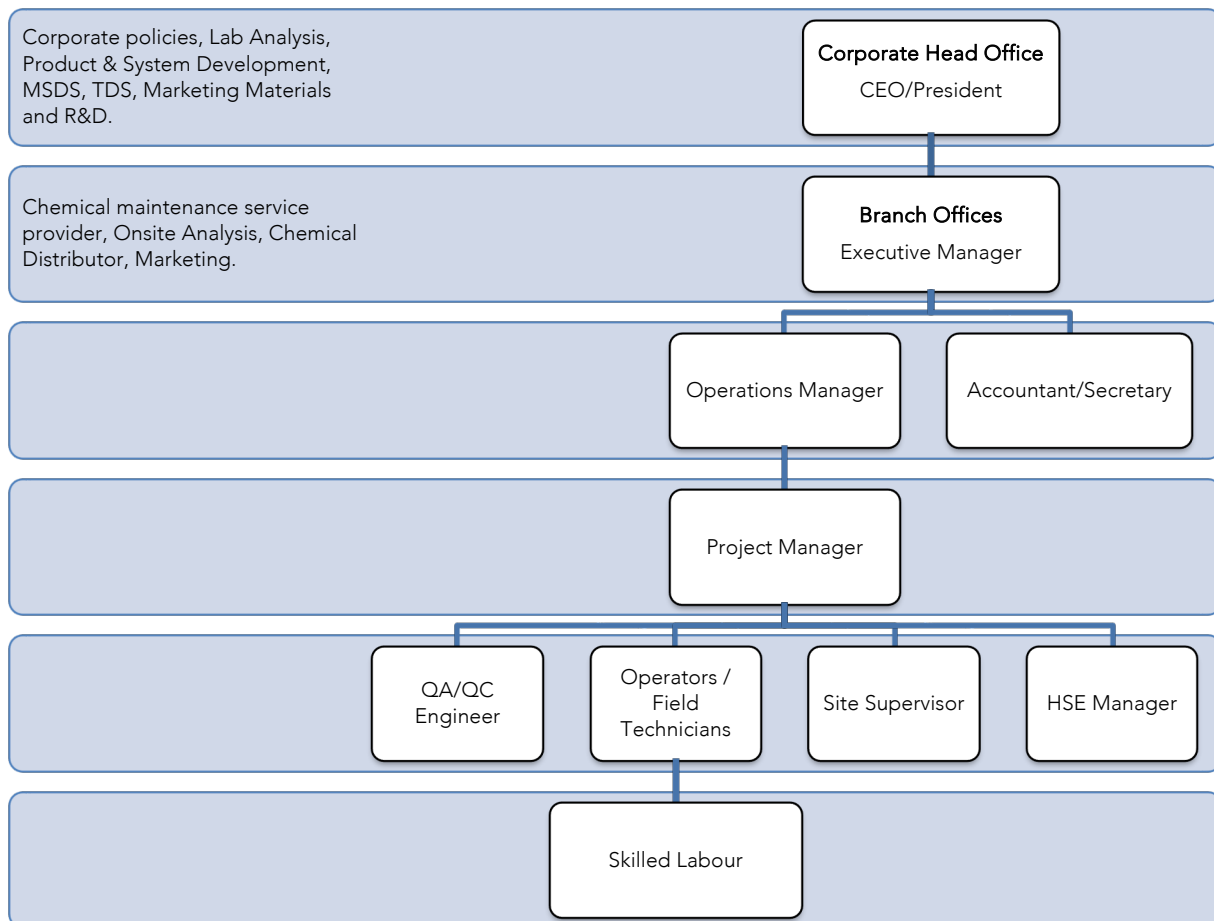
CTI
Location: Alberta Canada
Region Serviced: North America, South America, The Americas and Caribbean Regions

ALFA LAVAL AB.
Location: Lund Sweden
Region Serviced: Global

RASTEC
Location: Doha, Qatar.
Region Serviced: GCC



Branch Structure





Corporate Mission

Our goal is to improve our customers' production efficiency by gaining a more comprehensive understanding of their process(es), contaminants, and waste streams.

Corporate Vision

Innovation fueled by Imagination.

Removing the risks from industrial chemical cleaning and wastewater/sludge management, whilst protecting people, communities, and environment.



Corporate Infrastructure

Canada Operations:

Branch Office and Laboratory

Address: 6812/14 78th Avenue NW, Edmonton, Alberta.

- Administration
- Lab Analysis, On Site Analysis, Quality Control, New Product Development, R & D
- Marketing
- Chemical Maintenance Service Provider
- Chemical Distribution

Warehouse

Address: 6812/14 78th Avenue NW, Edmonton, Alberta.

- Workshop
- Equipment Storage
- Chemical Storage

Equipment

- CIP units
- Foaming Unit
- Filtration System
- 3D Jets
- Generators
- Hoses, Pipes & Fittings
- Portable Lab



Corporate Assets

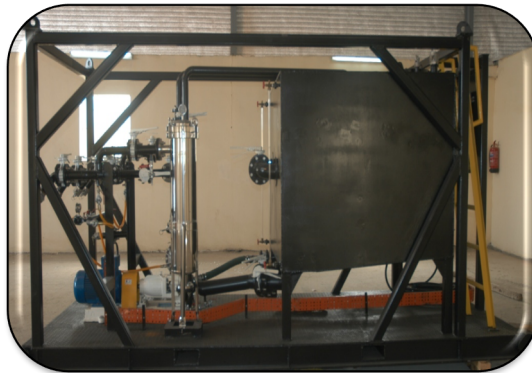
Assets



CIP Unit



CIP Unit



Foaming Unit



Corporate Services

CTI is a global provider of Chemical Maintenance Services, Industrial Wastewater / Sludge Management and Specialty Chemicals, to a broad range of industries including Oil & Gas Processing, Refineries, Petrochemical Plants, Mines and Municipalities.

Industrial processes generate waste streams and contaminants that can accumulate within the system, and negatively impact the efficiency of production facilities. From time-to-time plants are required to halt production and cleanout their system.

Through close analysis of a plant waste stream, contaminants and production process, CTI will design a chemical treatment to remove the contaminants while:

Reducing equipment downtime

Removing treatment uncertainties

Reducing generated waste and waste disposal cost

Our goal is providing our clients with the ability to optimize their process at all times by increasing production and transportation capabilities of infield hydrocarbon flow-lines, process / storage equipment and export pipelines.

Services offered by Conceptual Technologies Inc. are:

Cleaning In Place (CIP)

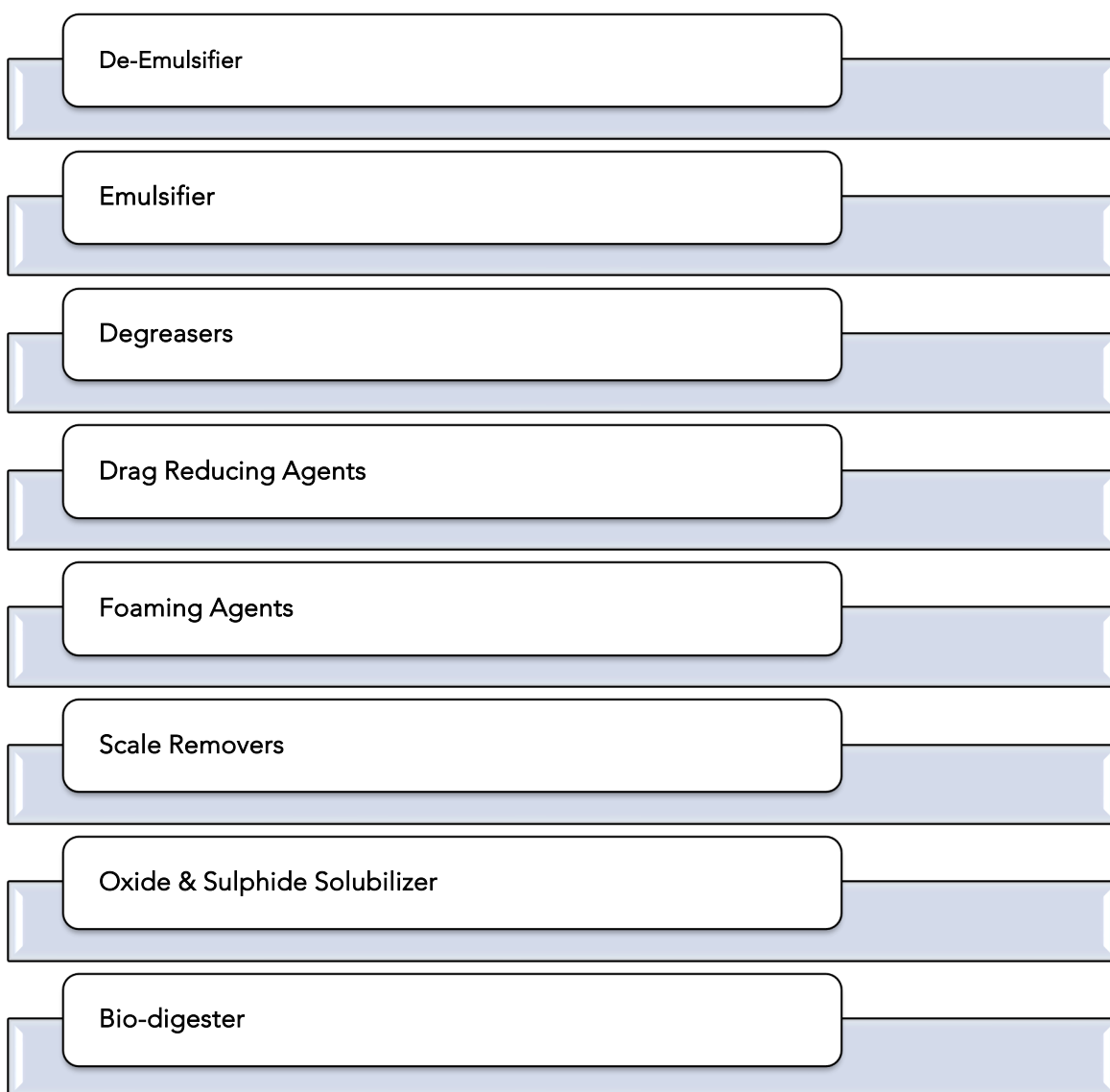
- CIP facilitates service and maintenance of equipment between process runs without dismantling the system. We provide CIP services for a broad range of applications, which include:
 - Heat Transfer Systems
 - Refinery Process Equipment
 - Process Tanks
 - Storage Tanks
 - Transfer Pipelines
 - Pre Commission Cleaning and Treatment



Specialty Products

CTI specializes in the development, manufacture, and marketing of a broad range of innovative specialty chemicals solutions.

All our products contain specially reacted surfactant blends that optimize its performance efficiency.





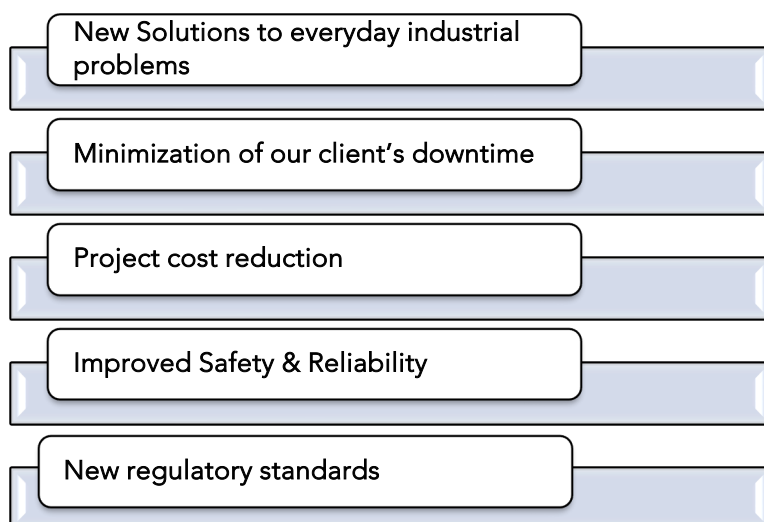
Marketing Network

Our services and products are available globally through our branch offices and corporate promoters.

For more information on our services and products, kindly contact the sales manager in your region.

Research & Development

At CTI we promote an ongoing Research & Development program. The benefit of this program can be readily seen through:





Quality Assurance

CTI quality assurance program ensures that we provide our clients with products and services that are always effective, safe, consistent, and reliable.

CTI operates a fully equipped laboratory, where all research and development, product analysis, system design and quality control tests are conducted.

At CTI we work with our clients and suppliers to: continually improve our products and services, protect our environment and ensure the safety and health of everyone that uses our products and services.

For production, CTI has aligned itself with ISO 9001:2000 registered suppliers and toll manufacturers that provide both raw materials and toll blending services.

Our products & packaging are compliant with UN regulatory standards.

CTI - Product Development

- Research & Development, Formulary Development, Formulary Testing, Production Procedure, Establish QC Parameters, Technical Data Sheet & MSD Sheet Development.

CTI - Production & Packaging

- Chemical Manufacturing, Raw Material Supplier, Blending, Quality Control, Packaging.

CTI - Quality Control

- Lab Analysis, Retained Sample, QC Test Parameters, Solvency Index

CTI - Shipping Department

- Approved Carriers, All shipping documents, SDS provided, ERP, Emergency Telephone Number

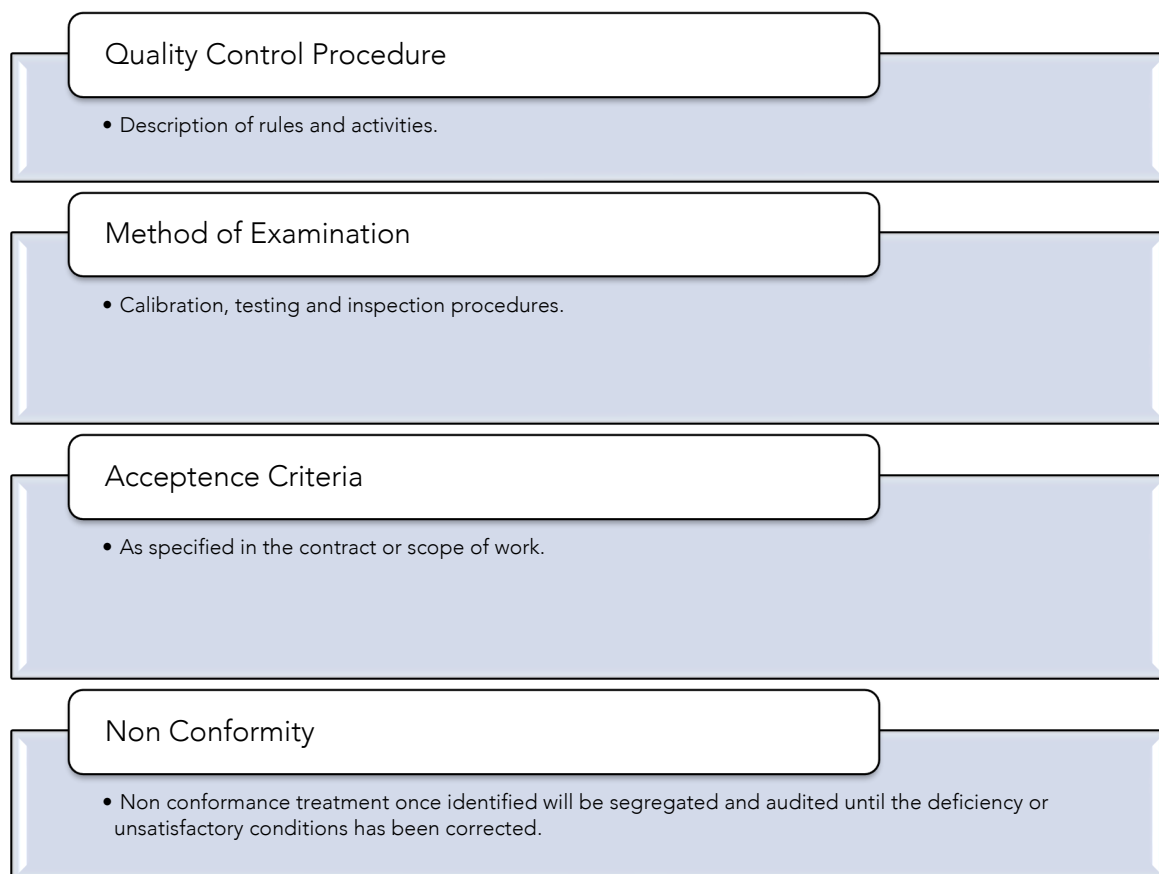


Quality Control

CTI quality control procedures define the parameters required to ensure that all quality requirements are satisfied as specified in the contract or scope of work as per international standards and/or the clients' requirements.

CTI ensures that for every project the engineering design, job execution, and testing activities are clearly specified and implemented under controlled conditions to ensure the quality, reliability, value, and integrity of the project.

Our quality control procedures describe a system of rules and activities encompassing engineering design, job execution and testing that are applicable to the specific technical requirement of the project.





HSE Policy

CTI is responsible for the Health and Safety of its employees, the employees of our business partners, clients, subcontractors, and others, who may be affected by our activities.

CTI will ensure that the company complies with the laws and statutes of the locale in which it operates.

CTI believes in giving highest priority to safety. We firmly believe that all accidents can and shall be prevented, by the proactive implementation of our HSE policy.

CTI is committed to the protection of the environment and will ensure that environmental hazards are identified and controlled.

CTI issues its HSE policy and guidelines to all company personnel, and employees of its business partners, to ensure that all job-related activities are conducted in a safe and healthy working environment.

For more information, kindly request a copy of our HSE policy.



Service Commitment

Our philosophy is to satisfy our customers' needs by providing superior levels of service and support.

We work with our clients to find the solution that is best suited for their application. Our personnel are always available to discuss with our clients the full extent of our service activities and products.

CTI believes in giving highest priority to safety. We firmly believe that all accidents can and shall be prevented, by the proactive implementation of our HSE policy.

At the conclusion of every project, CTI will provide the client with a Post Job Report, detailing all our activities, findings, and recommendations.



Our Clientele Include

SUNCOR Energy Inc. (Canada)

Shell Chemicals Canada Ltd. (Canada)

Albian Sands Energy Inc. (Canada)

Syncrude Canada Ltd. (Canada)

Alfa Laval AB (Sweden, Global)

Manitoba Hydro (Canada)

Dow Chemicals Canada Inc. (Canada)

Dubai Petroleum Establishment (UAE)

Petronas Gas Berhad (Malaysia)



Our Suppliers Include

Clartech Industries Inc.
Edmonton, Alberta, Ca.
www.clartech.ca

UNIVAR Solutions
Edmonton, Alberta, Ca.
www.univarsolutions.com

Fayfa Chemicals Factory
Dubai, UAE.
www.fayfachemicals.com

EXCEL Chemicals Sdn. Bhd
Selangor, Malaysia
www.excelchemicals.com.my